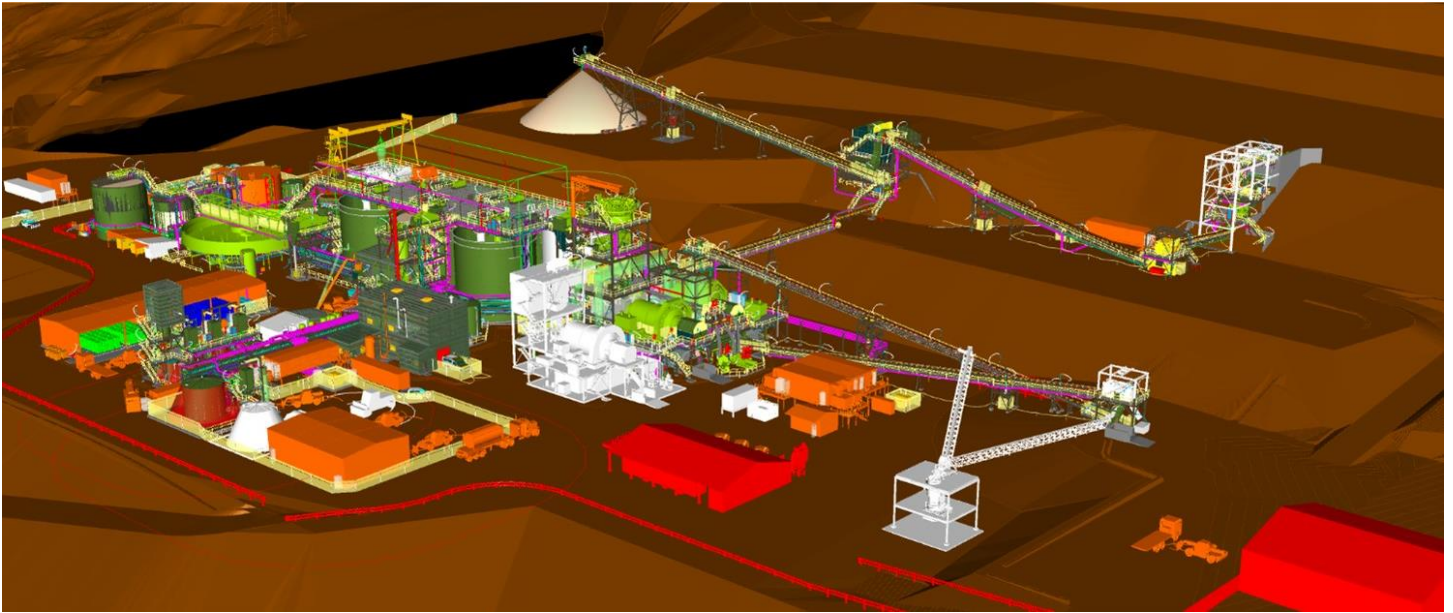


Awak Mas Gold Mine

CIL/CIP Plant Detailed Design



Project

Awak Mas Gold Project

Location

South Sulawesi Indonesia

Client

Petrosea / PT Masmindo DWI Area (MDA)

Scope

Detailed Engineering Design

Description

PT Masmindo DWI Area (MDA), are developing the Awak Mas Gold Mine. PT Petrosea are managing the global project engineering for MDA and have engaged Como Engineers to provide the detailed engineering design and execution, procurement support and commissioning planning and support for the mineral processing facility.

Stage 1 of the processing plant is designed to process 2.5 Mtpa of gold ore via a SAG and Ball Mill grinding circuit including gravity gold recovery and CIL recovery of gold from gravity tailings. Gold will be recovered from the activated carbon using a 7 tonne capacity split AARL elution circuit and carbon regeneration plant. Dore will be recovered by smelting of electrowon gold recovered from the CIL and gravity circuits.

CIL tailings will be treated for safe disposal prior to pumping to a tailings storage facility 300 metres below and 4.7 km distant from the process plant.

The Stage 1 design includes provision for an expansion (Stage 2) for processing of 3.6 Mtpa in future.

This project was undertaken utilising the PT Como Engineers resources based in Jakarta along with project management and metallurgical support from the Como Engineers office in Perth.

