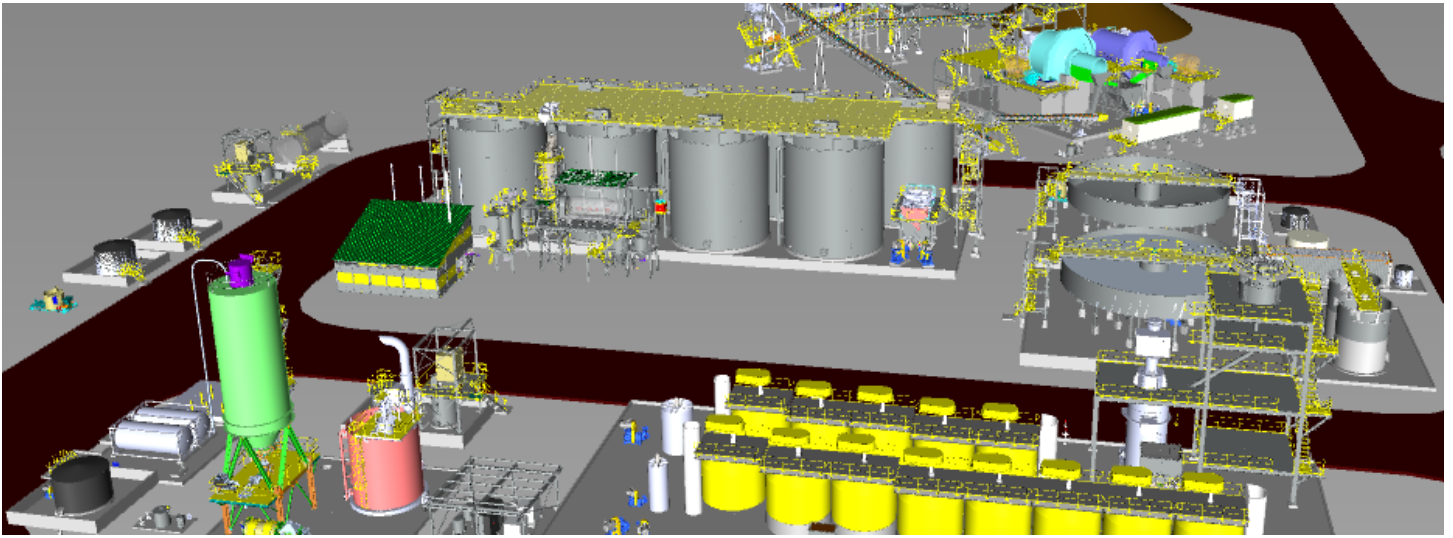


Bardoc Gold Project

PFS and DFS for 1.5 Mtpa Refractory Gold Process Plant



Project

Bardoc Gold Project

Location

Western Australia

Client

Bardoc Gold Limited

Scope

Pre-Feasibility Study and Definitive Feasibility Study

Description

Como Engineers were engaged to undertake a Feasibility (PFS) and Definitive Feasibility Study (DFS) for the process design of a 1.5 Mtpa refractory gold process plant and associated infrastructure.

The initial PFS investigated four process configurations, which ranged from a standard 1.5 Mtpa CIL/CIP plant to treat the initial oxide ore, followed by expansion options for a flotation circuit with a subsequent Pressure Oxidation (Albion) route. An alternative option investigated concentrate for sale or via toll treatment.

The DFS envisaged a flotation circuit to produce a saleable concentrate, with the flotation tails being treated through a CIL circuit.

Como Engineers developed the non-process infrastructure capital costs, and the process plant design, for which Capital and Operating cost estimates were derived. Como Engineers also engaged and coordinated the study along with other discipline consultants.

The design incorporates modular packages to assist with streamlining of the construction schedule and commissioning of the gold plant.

