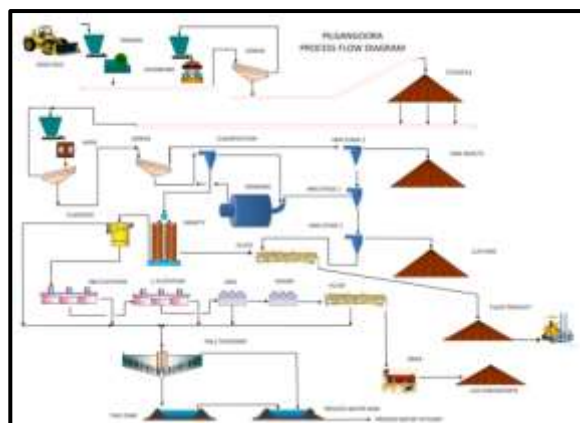


Pilgangoora Lithium -Tantalite Project

Scoping, Pre-feasibility, Definitive Feasibility and Early Contractor Involvement Studies



Project

Pilgangoora Lithium-Tantalite Project
Scoping Study, Pre-Feasibility Study, Definitive Feasibility Study, Expansion Study, Early Contractor Involvement Study

Location

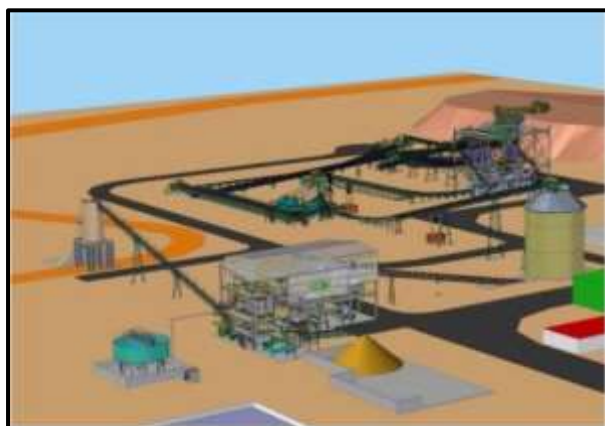
Pilbara, WA

Client

Pilbara Minerals Limited

Commencement Date: 2016

Practical Completion: Ongoing



Description

Como Engineers have worked closely with Pilbara Minerals to complete the initial Scoping, Pre-feasibility, Definitive Feasibility and Expansion studies for the Pilgangoora Lithium-Tantalite Project prior to the commencement of Early Contractor Involvement work during the Tender phase of the project.

Como was able to deliver a seamless stream of successful study outcomes for Pilbara that has allowed them to develop their project.

The Pilgangoora Project is located 120km south of Port Hedland in the Pilbara region and is the second largest Spodumene-tantalite resource in the world.

The Feasibility Studies confirmed robust project economics based on initial production of ore throughput of 2Mtpa, producing three product streams.

Study Manager

Alisdair Finnie