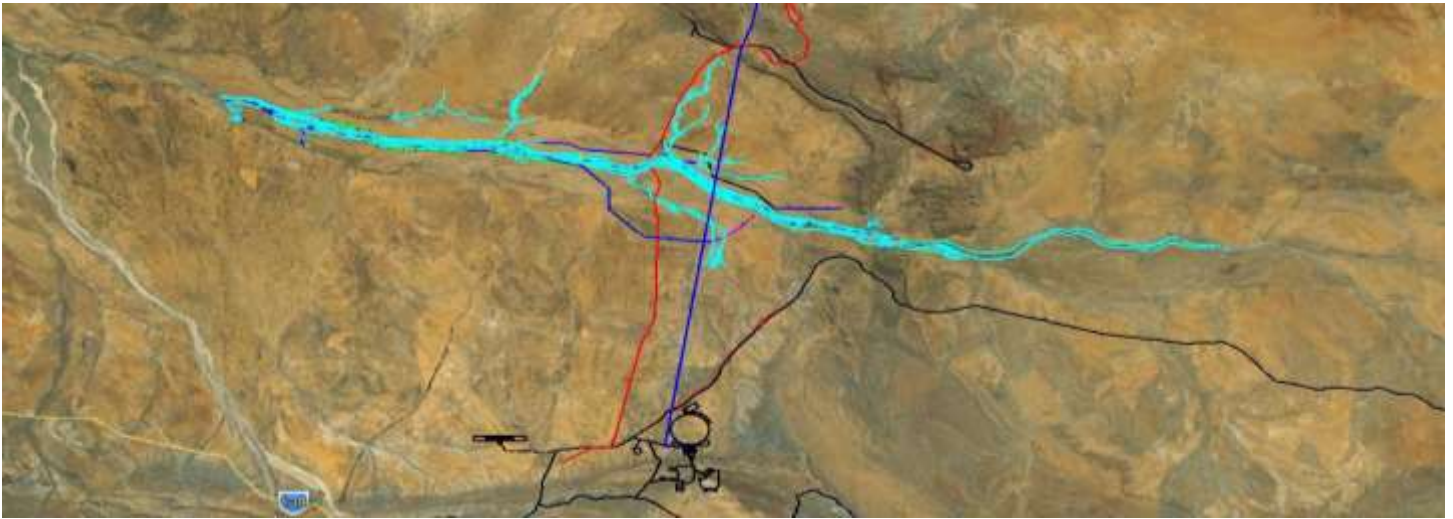


Moly Mines Spinifex Ridge Project

DFS for 87km Water Supply Piping System



Project

Moly Mines Spinifex Ridge Molybdenum Project

Location

Pilbara, Western Australia

Client

Moly Mines Limited

Commencement Date

January 2007

Practical Completion

May 2007



Description

Como Engineers undertook all the infrastructure components of the DFS for the \$1.1B Moly Mines Spinifex Ridge Molybdenum Project. The Water Supply System was only one part of this work.

The Water Supply System comprised drawing water from two separate borefields, being the Canning A (15 bores) borefield and the De Grey River Borefield (40 bores). The design included turkeys nest transfer and storage dams, 2ML storage and transfer tanks, multiple pumping stations and a significant river crossing at the De Grey River, all to feed a 1,600 person construction camp, 20Mtpa processing plant and mining operations.

There were multiple route and power supply options investigated, a complete telemetry control and monitoring system designed for each bore and transfer station, and the capex included all required earthworks, concrete works, equipment, piping, telemetry, installation and commissioning costs to an accuracy of less than +/-15%.

Hydraulic modelling software package, FluidFlow3, was used to design the complete system in detail and to generate the necessary drawings and reports.

Project Manager Martin Smith